



FERRETTI
YACHTS

881 RPH



Yacht Information

Price \$8,550,000 Delivered inc. GST

Builder	Ferretti Yachts
Model	881 RPH
Year	June 2011
LengthOverall (m/ft)	27.07 (88ft 10in)
Hull Length (m/ft)	26.94 (88ft 4in)
Beam (m/ft)	6.72 (22ft 1in)
Draft (m/ft)	2.18 (7ft 2in)
Cabins	4
Guests/Crew	2
CruisingSpeed	25 Knots

Max Speed	31kts
Fuel Capacity	11,500 Lt
Engine(s)	Twin MTU
Power	16V M92 2218 hp
Generator(s)	2 x 28KW Kohler
Stern Thruster	50 Hp Hydraulic
Bow Thruster	50 Hp Hydraulic
Stabilizers	2 x ARG 4000
Air Conditioning	Tropical Throughout
Anchors	2 x 90kg stainless steel & 150m chain



Jones Bay wharf 19-21
Suite 90, 26-32 Pirrama road
Pyrmont NSW 2009

T: 02 9518 6977
F: 02 9571 4377
E: info@jwmarine.com.au

www.jwmarine.com.au



881 RPH

Non standard options fitted

Doors on sidewalks

Additional 2500 Lt long range fuel tank

8 x underwater lights

Shore fresh water intake

2 x Gaggenau BBQ's on flybridge

Side and Aft floodlights

Control station in cockpit with cover

Additional lights in sidewalk

Electric sliding salon door

Teak on fly

Electric raising for curtains on main deck

Additional folding bed in crew cabin

92 Lt Freezer beneath corridor floor

Washer & dryer separate units

Tropical air-conditioning in cabins/crew and engine control room

2 x Kohler 28KW generators

2 x Smoke separators for generators

Additional freezer in salon

Additional microwave in crew galley

Coastal communicator Wi-fi 3G internet system

Navnet 3D Black Box Control

Navtex receiver display, Furuno NX-300

AIS Furuno Class B (TX-RX FA 50)

Wind System Furuno RD 33

Wind repeater in crew area

Echosounder interphase SE 200A

Flir thermal night vision camera

2 x stainless steel 90kg Anchors

Pullman bed in guest cabin

Stainless steel railing on fly

Removable swimming ladder for transom

Removable pulpit for garage door

CCTV: 2 cameras in engine room, 1 in cockpit and 1 in compartment

High pressure water system for deck

Wooden floor in salon

Marble tops in fly bridge furniture

Additional Naviop touch panel control in crew area

Dedicated equipment fuel dispenser in garage

46" TV in Salon

32" TV in Master

20" TV's in all guest & Crew cabins

Navnet 3D: Furuno pack upgrade

Side electric exit doors

Queen size bed in Starboard guest cabin

2 x search lights on flybridge electrically controlled

Mosaic tiles in Master cabin bathroom

Mosaic tiles in all guest cabin bathrooms

Additional Ice maker on fly

Centralized vacuum system

Printer/Fax

SAT TV, KVH M9 system

V SAT mini internet KVH M-7

Marble insert in master cabin bathroom

Additional fridge in fly bridge furniture

TV distribution for SAT TV & CCTV

Wine cooler in Galley



Jones Bay wharf 19-21
Suite 90, 26-32 Pirrama road
Pyrmont NSW 2009

T: 02 9518 6977
F: 02 9571 4377
E: info@jwmarine.com.au

www.jwmarine.com.au



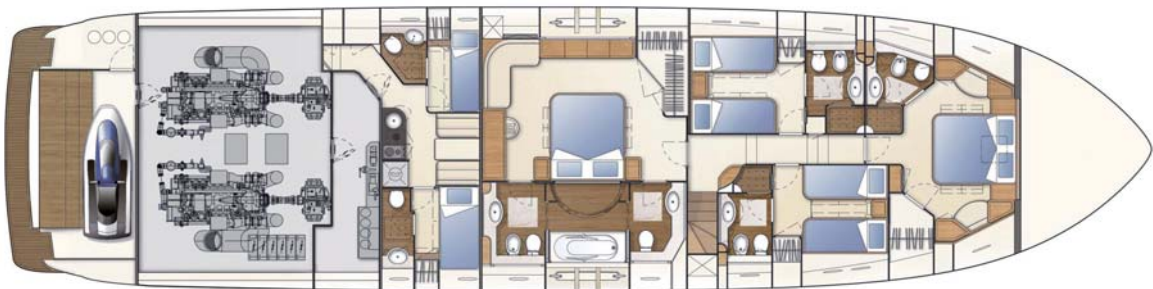
Fly Bridge



Main Deck



Lower Deck



Jones Bay wharf 19-21
Suite 90, 26-32 Pirrama road
Pyrmont NSW 2009

T: 02 9518 6977
F: 02 9571 4377
E: info@jwmarine.com.au

www.jwmarine.com.au



Jones Bay wharf 19-21
Suite 90, 26-32 Pirrama road
Pyrmont NSW 2009

T: 02 9518 6977
F: 02 9571 4377
E: info@jwmarine.com.au

www.jwmarine.com.au